



ENERGIZING
PROSPERITY
FOR ALL



TRANSFORMERS

DISTRIBUTION TRANSFORMER



Hermetically Sealed Type

Single phase, Capacity 30 to 100 kVA



Hermetically Sealed Type

3 phase, Capacity 50 to 2,500 kVA



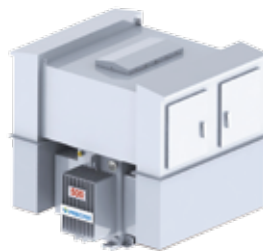
Completely Self Protected Type (CSP)

3 phase, Capacity 150 to 225 kVA



Conservator Type

3 phase, Capacity 50 to 1,500 kVA



Station Service Transformer Oil-immersed type

for Substation with cable connection boxes
3 phase, Capacity 50 to 1,500 kVA



Dry Type Cast Resin Transformer



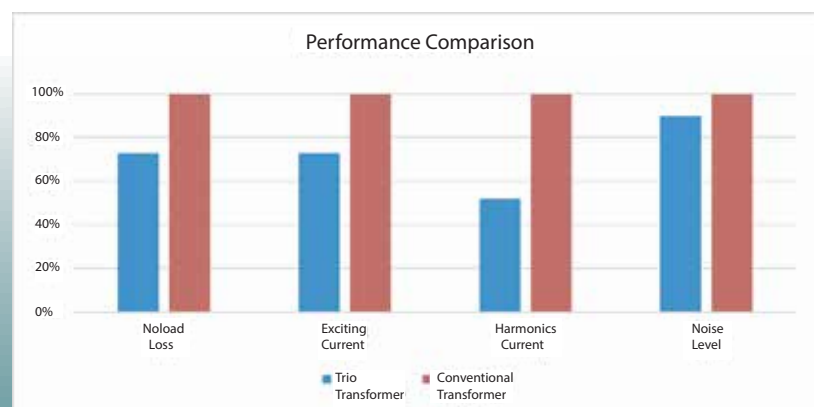
Amorphous Metal Distribution Transformer

การผลิตอยู่ภายใต้ข้อตกลงการอนุญาตให้ใช้สิทธิในด้านเทคโนโลยี
การใช้แกนอะมอร์ฟัสของฮิตาชิโดยความร่วมมือของ บริษัท พรีไซส์
อิเล็กทรอนิกส์ แมนูแฟกเจอริ่งจำกัดและบริษัทฮิตาชิ อินดัสเตรียล
อีควิปเม้นท์ ซิสเต็ม (HIES), นากาโจ นิอิกาตะ ประเทศญี่ปุ่น

Manufacturing under Technical License Agreement between
With Using Hitachi Amorphous Core PRECISE Electric Mfg.
and Hitachi Industrial Equipment and System (HIES),
Nakajo Niigata Japan.



TriO Transformer 3 Phase 22kV



Note: Above information based on tested transformer at same flux density



DC Distribution Board



AC Distribution Board



Main Distribution Board Outdoor type



Junction Box



Unit Substation



Main Distribution Board Type tested certificate by Legrand

POWER CAPACITORS



Low Voltage Outdoor :: Capacitor type CAP



Outdoor Low Voltage Capacitor Automatic Power Factor Correction (APFC)



One bushing



Two bushing

Outdoor Medium Voltage Capacitor Capacitor type CLM

Low Voltage Current Transformer



Type LExM / LEM



Type LDB



Type BCT



Type CDB



Type CExL

Medium Voltage Current Transformer Indoor up to 24 kV:

Support Type Current Transformer for Switchgear type CEL

Support Type Current Transformer for Switchgear type CET



Type CEL



Type CET

Medium Voltage Voltage Transformer Indoor up to 24 kV:

Single Pole for Switchgear Insulation type VEG

Double Pole for Switchgear Type VEL



Type VEG



Type VEL

Medium Voltage Voltage Transformer Outdoor up to 24 kV:

Single Bushing for Pole Mount Installation type VExG

Double Bushing for Pole Mount Installation Type VExL



Type VExG



Type VExL

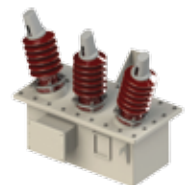
Medium Voltage Outdoor System up to 36 kV :

Single phase Voltage Transformer Type VOL

Three Phase Voltage Transformer Type VOG for PEA



Type VOL



Type VOG

Medium Voltage Outdoor System up to 36 kV :

Voltage Transformer for Substation Type VOG for EGAT

Current Transformer for Metering Purpose Type COL



Type VOG



Type COL

Medium Voltage Outdoor System up to 36 kV:

High Voltage Outdoor System up to 123 kV:

Current Transformer for Substation Type COU



Type COU



LED LIGHTING

LED BULB / TUBE / HIGH BAY / STREET LIGHT / FLOOD LIGHT



LED Bulb 7,9 W



LED TUBE 8,16 W



LED HIGH BAY 50-200 W



LED STREET LIGHT 20 W



LED FLOOD LIGHT /SPOT LIGHT
40-300 W / 400 W



LED STREET LIGHT 40-300 W



SOLAR STREET LIGHT 20-120 W
(Dimming Function/Non-Dimming Function)

ELECTRONIC METER



PT100 (MEA)



PT100 (PEA)



DDS720



Poly Phase Smart Meter :
Type PT100 Model I-43AKEBAG

Properties

- There is alarm signal indicated any unauthorized using electricity energy
- Displaying results in digital which is clearly visible
- Electricity energy measurement is more accurate than Watt-hour Meter
- It is installed both indoor and outdoor
- There is Dormitory Management System Software



Poly Phase Meter :
Model CL730D18

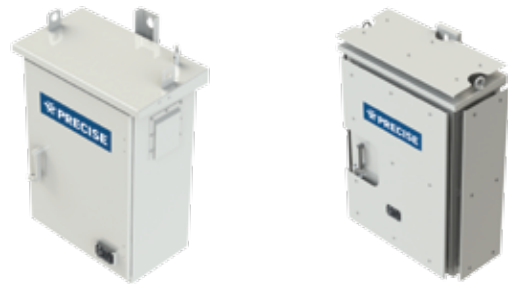


Single Phase Smart Meter :
Type PT100 Model I-21BWEBAG

SF6 Gas Load Break Switch



Control Box for SF6



CB-01 (with a space for SMS unit) CB-02 (with a space for FRTU)

Solid Dielectric Load Break Switch Type SLBS-24



Automatic Circuit Recloser: SREC-24



Medium Voltage Disconnecting Switch Type SLOC/D



Low Voltage Surge Arrester
MOV Gapless Surge Arrester
type LAS-002, LOZA



LAS-002



LOZA

Medium Voltage Surge Arrester
MOV Gapless and Silicone
Housed Surge Arrester for
Distribution System

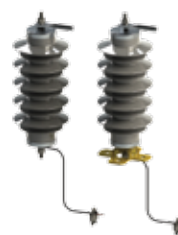


Installation in Distribution



Installation at Transformer

Medium Voltage Surge Arrester
MOV Gapless and Silicone
Housed Surge Arrester for
Substation



FUSE

High Voltage Distribution Fuse Cutouts



Catalog no. 2710832



Catalog no. 2711232



Catalog no. 2711232PG

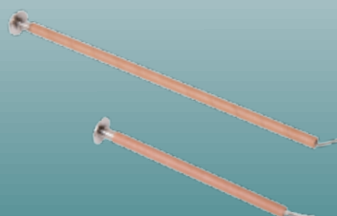


Catalog no. 3810865

Low Tension Fuse Switches




High Voltage Distribution Fuse Links





Precise Electric Manufacturing Co.,Ltd.
1/5 Moo 9 Bangpood, Parkkred
Nonthaburi 11120 Thailand

 : 092-283-6660
(+66) 02-584-2367 ต่อ 609

 : info@precise.co.th

 : (+66) 02-584-1682